

PHASE 3 SINGLE POLE ELECTRICAL DEVICES

Installation Instructions – Panel Connector

GENERAL INFORMATION:

CAUTION: Risk of Electric Shock. Disconnect power before installing connector. Never wire energised components. For installation by a qualified person in accordance with national and local electrical codes.

CAUTION: Use copper conductors only.

CAUTION: Not for interrupting current.

CAUTION: Rated for use with 90°C power cable types, SC, SCE, SCT, G, PPE, PPC or W

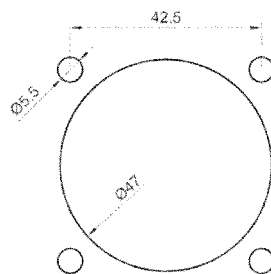
CAUTION: Magnetic ferrous enclosures mounting surfaces can generate heat from inductive fields.

Part Number	Contact Material	Copper Cable Size	Ampacity (Maximum)	Nut Torque Setting	Thread & Nut Size
T8	Copper	400 Kcmil	600A	14NM	M12
		350 Kcmil	570A		
		300 Kcmil	505A		
T5	Brass	250 Kcmil	455A	14NM	M12
		4/0 AWG	400A		
		3/0 AWG	350A		
		2/0 AWG	300A		
		1 AWG	220A		
		2 AWG	190A		
4 AWG	105A				

Recommended Assembly Procedure:

1. Remove from the packaging:
2. Attach connector to pre-drilled panel:
 - Minimum thickness of panel 0.125" (3mm).
 - Ensure supplied gasket is seated between panel and connector base
 - Using x4 M5 mounting nuts & bolts, tighten to 2.26NM

Panel Mounting Hole Dimensions



3. Attach lugged cable only to the rear of the connector by passing the M12 threaded post through the eye of the lug – Note; cable should be attached to the lug in accordance with lug suppliers specifications.
4. Screw on the supplied M12 brass nut – Note; never use any other M12 nut other than the one supplied by Phase 3 Connectors Ltd.
5. Tighten the M12 nut to 14NM.

***** WARNING *****

Do not alter this product in any way. Doing so may lead to serious injury or death. Use copper conductors only. Read Instructions completely before wiring. Ensure all safety checks are carried out before and after use. This product should be installed, inspected and maintained by qualified electricians only, in accordance with local and national electrical codes. If in doubt, seek advice from Phase 3 Connectors.